



Electrolux
PROFESSIONAL

Modular Preparation 2400 mm Drop-in Bowl with 2 Bowls

ITEM # _____

MODEL # _____

NAME # _____

SIS # _____

AIA # _____



855238 (T2V12400)

Drop-in 2 bowls (600x500)
and 2 drainers, 2400mm

Short Form Specification

Item No. _____

Made from 304 AISI stainless steel. The 40mm high worktop is in 304 AISI stainless steel. Heavy duty splashback is 100mm high with a 45° top angle with welded sides and rear part covered by stainless steel profile. Bowls fully welded and with polished corners.

Bowls mm600x500x250h with overflow pipe and 70Ø drain holes with two drainers (left and right).

Main Features

- Extremely easy to clean thanks to the large and smooth seamless surface with Scotch-Brite finishing.

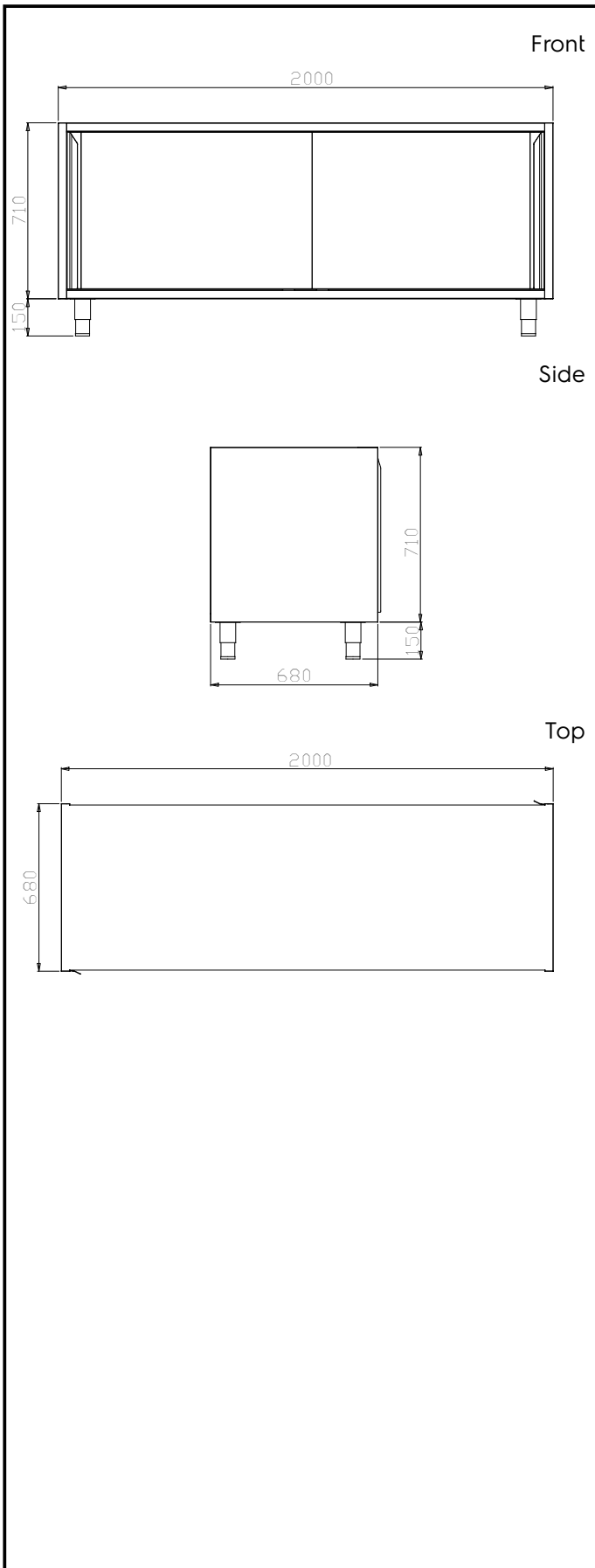
Construction

- 304 AISI stainless steel worktop (CrNi 18/10) 40 mm high, 15/10 (16 gauges) thickness.
- 100 mm boxed heavy duty splashback with a 45° degrees top angle, folded directly from the worktop, has fully welded sides and rear part completely covered by stainless steel profile to avoid water spillage on modules below.
- For a work height of 900 mm, worktops can be mounted on: solid bracket, solid bracket plus 50x50mm legs, 710 mm ambient, with hinged or sliding doors, placed on oversized (65x65mm) 150mm high feet (0/+90mm adjustable in height).
- 600x500x250 10/10 bowls.
- Bull-nose special shape front profile, without burrs, avoids water leakage on modules below.
- Fully welded and polished corners.

APPROVAL: _____



Experience the Excellence
www.electroluxprofessional.com
professional@electrolux.com



Key Information:

External dimensions, Width:	
855238 (T2V12400)	2360 mm
External dimensions, Depth:	550 mm
External dimensions, Height:	250 mm
Net weight:	4 kg